

February 2025

# **SPORT** **INFORMATION** **BOOK** *Bobsleigh*

Olympic Winter Games Milano Cortina 2026





# TABLE OF CONTENTS

<b>1 OVERVIEW</b>	<b>4</b>	<b>4 COMPETITION RULES</b>	<b>29</b>
<b>2 COMPETITION VENUE</b>	<b>5</b>	4.1 COMPETITION MANAGEMENT	30
2.1 CORTINA SLIDING CENTRE	6	4.2 COMPETITION FORMAT	32
2.2 CORTINA OLYMPIC AND PARALYMPIC VILLAGE	11	4.3 TEAM CAPTAINS' MEETINGS (TCM) AND DRAWS	33
2.3 TRANSPORT SYSTEM	13	4.4 PROHIBITION OF TRAINING	33
<b>3 GENERAL RULES</b>	<b>15</b>	4.5 PROTESTS	33
3.1 QUALIFICATION SYSTEM FOR BOBSLEIGH	17	4.6 TIMING AND SCORING	34
3.2 SPORT ENTRIES AND QUALIFICATION	27	4.7 COMPETITION EQUIPMENT	34
3.3 DOPING CONTROL	28	4.8 AWARDS	34
		<b>5 COMPETITION SCHEDULE</b>	<b>35</b>



# ***ABOUT THE SPORT INFORMATION BOOKS***

Published in February 2025, the Sport Information Books aim to assist National Olympic Committees (NOCs) in their preparation for the Olympic Winter Games Milano Cortina 2026, by offering a detailed introduction to each sport and providing, at the same time, pertinent information on a variety of other fundamental topics that may be of importance to NOCs.

This guide is divided into several sections:

- sport-specific information on subjects such as the competition venue and format, competition rules, training, qualification criteria, etc.;
- general information about athletes' villages, transport, medical services, doping control, awards etc.; and
- a venue map, a venue fact sheet and a daily competition schedule for all sports.

All information provided in this Sport Information Book was correct at the time of publication in February 2025, however, please note that details may change between this date and the Games.



# 1 OVERVIEW

The Cortina Sliding Centre will host the bobsleigh competitions for the Olympic Winter Games Milano Cortina 2026 from 15 to 22 February 2026.

Training will also take place at the Cortina Sliding Centre. Pre-training will begin on 4 February 2026, while official training will begin on 12 February 2026.

The pre-training schedule is subject to change and will be confirmed at a later time.



## Men's Events (2)

2-man  
4-man

## Women's Events (2)

Women's monobob  
2-woman



## 2 COMPETITION VENUE





## 2.1 CORTINA SLIDING CENTRE

**3,200**  
*Gross Capacity*

### FIELD OF PLAY

VERTICAL DROP	COURSE LENGTH	NUMBER OF CURVES
107m	1,440m	16

### ATHLETES SERVICES

Each team is entitled to the use of the athlete lounge, which includes free Wi-Fi access and food and beverage services.

### DISTANCES FROM CORTINA TO OTHER CLUSTERS

CLUSTER	KM	TIME BY OCOG SERVICES*	SELF-DRIVE TIME
Milano	410	5 hr	5 hr 30 min
Valtellina (Bormio)	305	n/a	5 hr 45 min
Valtellina (Livigno)	270	n/a	5 hr
Val di Fiemme	85	2 hr 30 min	2 hr 15 min

\*Travel times between clusters are calculated by considering journeys by public transport and/or train, complemented by Olympic transport services (where available). Please note that some clusters are not directly connected by regular transport services. More detailed information will be provided later.

DISTANCES FROM CORTINA SLIDING CENTRE TO OTHER LOCATIONS WITHIN THE CLUSTER

LOCATION	KM	TIME BY TC* SERVICES
Cortina City Centre – Bus Station	2	10 min
Cortina Olympic Village	6	15 min
Tofane Alpine Skiing Centre	5	15 min
Cortina Curling Olympic Stadium	3	10 min
Off-Site Parking Fiames	5	15 min
Anterselva Biathlon Arena	67	1 hr 30 min
Dobbiaco Train Station	31	50 min
Venezia Mestre Train Station	152	3 hr

\*Transport within the clusters is provided by Transport Connect (TC), an Olympic transport service shared between all stakeholders

AREA MAP

- Security Perimeter
- S

 Start
- F

 Finish
- 1

 Field of Play
- 2

 Athletes' Lounge
- 3

 Doping Control Station
- 4

 Athletes' Medical Station
- 5

 Athletes' Changing Room
- 6

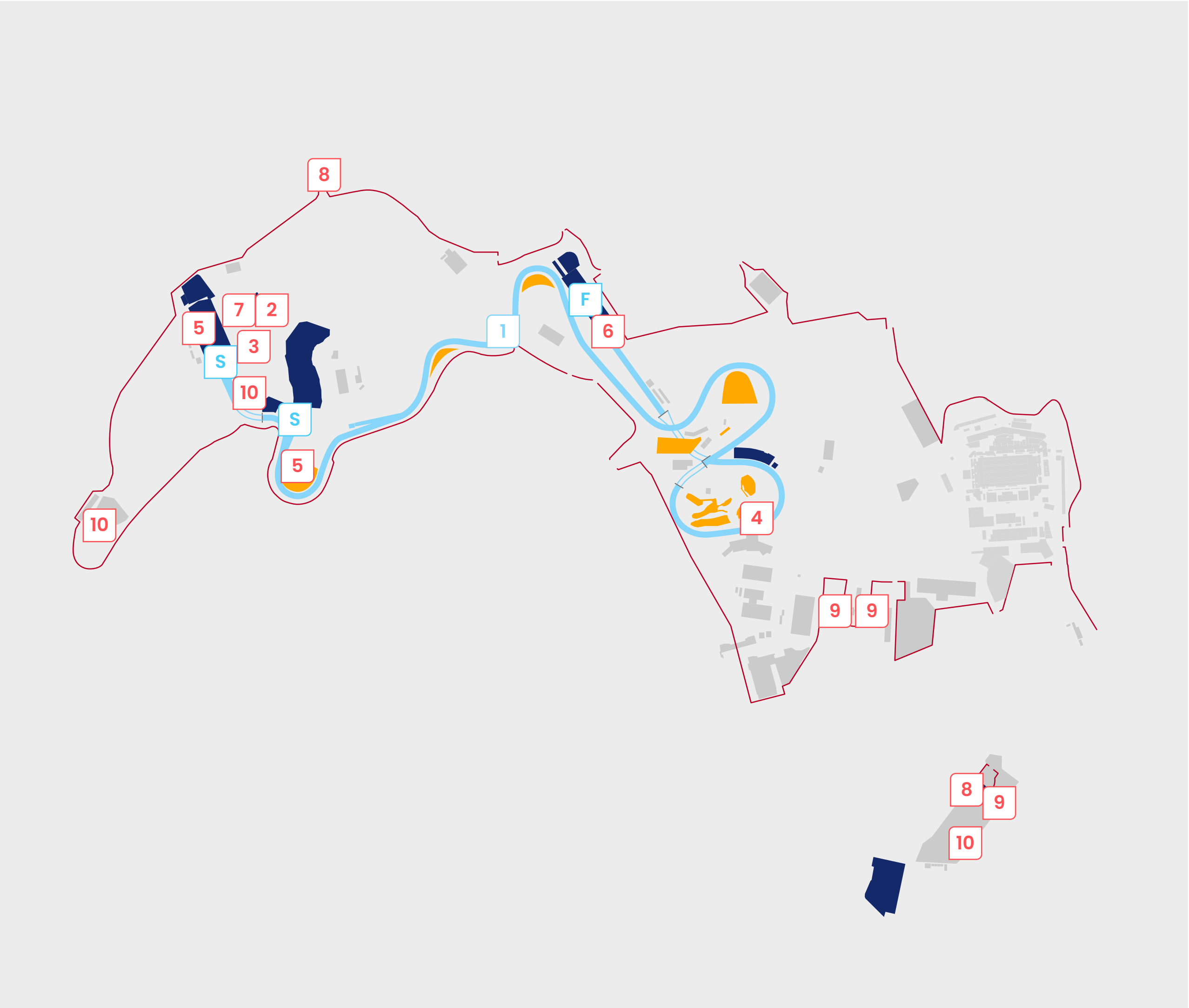
 Mixed Zone
- 7

 IF Offices
- 8

 Vehicle Screening Area
- 9

 Pedestrian Screening Area
- 10

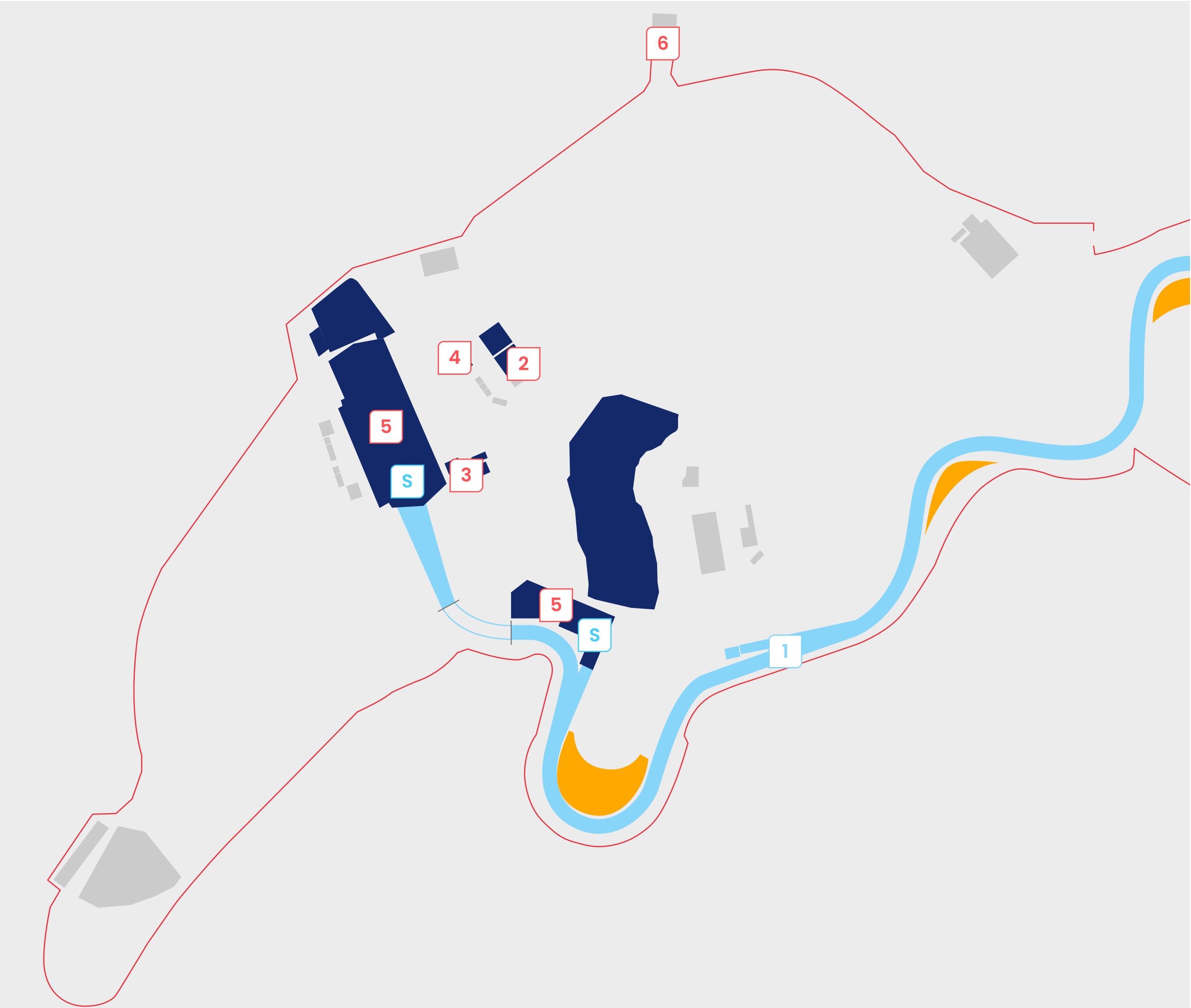
 Parking Area





VENUE MAP (DETAIL)

- Security Perimeter
- S Start
- 1 Field of Play
- 2 Athletes' Lounge
- 3 Doping Control Station
- 4 IF Offices
- 5 Athletes' Changing Room
- 6 Vehicle Screening Area





VENUE MAP (DETAIL)

- Security Perimeter
- F Finish
- 1 Field of Play
- 2 Athletes' Medical Station
- 3 Mixed Zone





## 2.2 CORTINA OLYMPIC AND PARALYMPIC VILLAGE

The Cortina Olympic & Paralympic Village will consist of a temporary structure created for the Olympic and Paralympic Winter Games, made up of tents and prefabricated buildings.

The Village will be located at an altitude of 1,285m, 6km (15 minutes) from the Cortina Sliding Centre and approximately 50km (75 minutes) from Anterselva/Antholz.

**1,043**  
*Planned number of residents*

**ALPINE SKIING (WOMEN),  
BOBSLEIGH, SKELETON,  
LUGE, CURLING**  
*Residents by sport discipline*

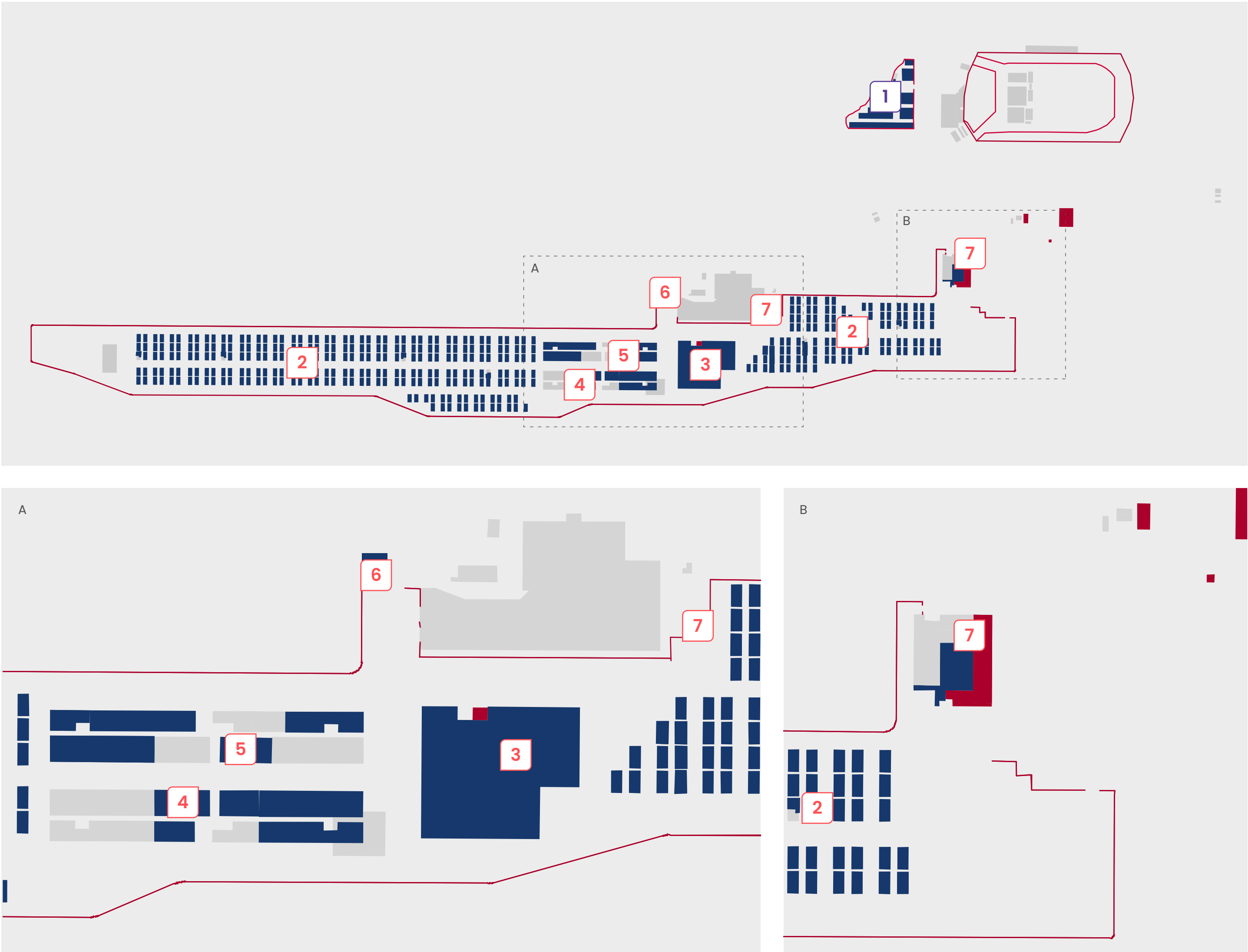
**PREFABRICATED MODULAR  
RESIDENTIAL PODS**  
*Housing type*



CORTINA OLYMPIC & PARALYMPIC VILLAGE

— Security Perimeter

- 1 Wax Cabins
- 2 Athletes' Accomodation
- 3 Main Dining Room
- 4 Fitness Centre
- 5 NOC/NPC Services Centre
- 6 Vehicle Screening Area
- 7 Pedestrian Screening Area





# 2.3 TRANSPORT SYSTEM

## ATHLETES TRANSPORT SYSTEM (TA)

The TA Transport System dedicated to athletes and team officials will be in operation throughout the period that the Olympic Villages are open, from 27 January 2026 to 25 February 2026 (dates TBC).

The service will be operated with buses and coaches. Sport equipment that can be transported directly by the athletes may be brought on board.

The TA system includes:

- training and competitions transport services;


- transport services for spectating athletes from the same discipline (TBC); and
- additional team official (ATO) transport services, if accommodated in the Village.

## OTHER SERVICES

Arrival and departure transport for athletes, as well as transport for the Opening and Closing Ceremonies, will be provided with dedicated services (not included in the TA). More detailed information will be made available later.

TA SERVICE BETWEEN CORTINA OLYMPIC VILLAGE AND CORTINA SLIDING CENTRE	
Operation Period	27 January–25 February 2026
Estimated Distance	6km
Estimated Travel Time	15 min
Estimated Frequency	Off-peak time: every 60 min Peak time (3 hours before and after competition/training): every 15 min
Vehicle Type	Buses and coaches





TRA - 18/02/2025

### Cortina Cluster Map

TA Bus Services

**Points of Interest**

- Ceremony Venue
- Cortina Olympic Village

**Transport Load Zones**

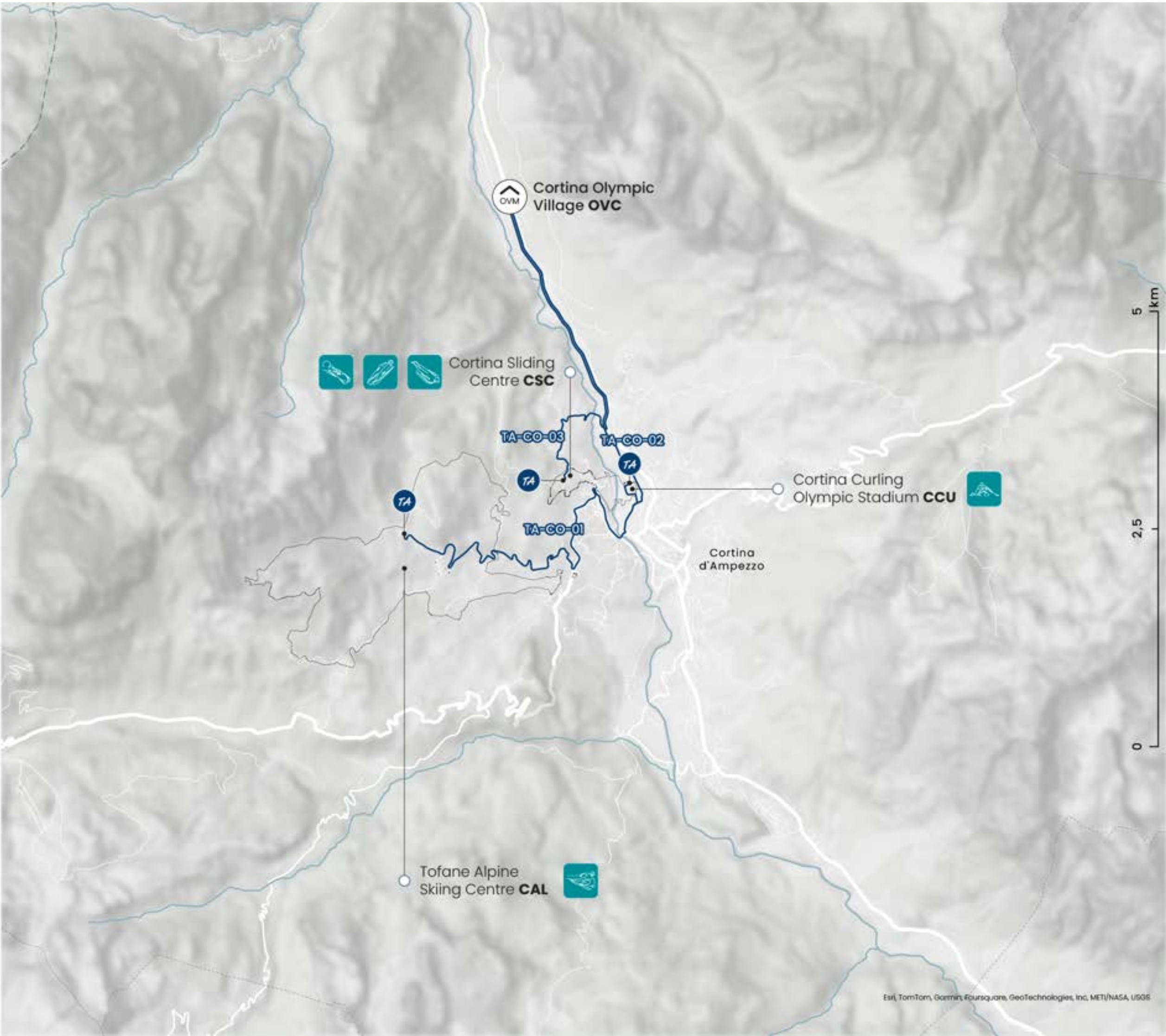
- TA Service

**TA Lines**

- TA-CO-01** OVC » Tofane Alpine Skiing Centre **CAL**
- TA-CO-02** OVC » Cortina Curling Olympic Stadium **CCU**
- TA-CO-03** OVC » Cortina Sliding Centre **CSC**

Alpine Skiing

- Bobsleigh
- Curling
- Luge
- Skeleton







# 3 GENERAL RULES





Bobsleigh competitions are held in accordance with [the current version of the International Bobsleigh & Skeleton Federations \(IBSF\) rules](#).  
In case of a disagreement in the interpretation of the rules, the English version prevails.

Any questions or incidents not covered by the rules are handled as follows:

- Cases of a general nature are resolved in accordance with the Olympic Charter.
- The jury will resolve technical questions according to the IBSF rules.



# 3.1 QUALIFICATION SYSTEM FOR BOBSLEIGH

Qualification systems are the regulations established by IFs that consist of rules, procedures and criteria for participation in competitions at the Olympic Winter Games. In case of discrepancies between the qualification systems and the Sport Information Book, the qualification systems will always prevail.

## 3.1.1 ATHLETES QUOTA

**Total Quota for Bobsleigh**  
170 (114 men, 56 women)

**Maximum Number of Athletes per NOC**  
**MEN**

- max. two NOCs with three crews per event
- max. seven NOCs with two crews per event
- eight NOCs with one crew per event

NUMBER OF CREWS QUALIFIED PER NOC		ATHLETES QUOTA PER NOC
2-MAN	4-MAN	
1	0	2
2	0	4
3	0	6
0	1	4
0	2	8
0	3	12
1	1	4
2	1	5
3	1	6
1	2	8
2	2	8
3	2	9
1	3	12
2	3	12
3	3	12



WOMEN

2-Woman Bobsleigh:

- max. three NOCs with three crews per event
- max. five NOCs with two crews per event
- six NOCs with one crew per event

Women’s Monobob:

- max. two NOCs with three pilots
- max. four NOCs with two pilots
- eleven NOCs with one pilot

NUMBER OF CREWS QUALIFIED PER NOC		ATHLETES QUOTA PER NOC
2-WOMAN	MONOBOB	
1	0	2
2	0	4
3	0	6
0	1	1
0	2	2
1	1	2
2	1	4
3	1	6
1	2	2
2	2	4
3	2	6
3	3	6
1	3	12
2	3	12
3	3	12



### Quota Place Allocation Type

Quota places are allocated to each NOC and are gender specific. The selection of athletes for any quota place is at the discretion of the NOC, subject to eligibility requirements.

### 3.1.2 ATHLETES ELIGIBILITY

All athletes must respect and comply with the provisions of the Olympic Charter currently in force, including but not limited to Rule 41 (Nationality of Competitors) and Rule 43 (World Anti-Doping Code and the Olympic Movement Code on the Prevention of Manipulation of Competitions). Only athletes who respect and comply with these rules, within the conditions of participation established by the IOC and within the rules of IBSF, may participate in the Olympic Winter Games.

#### Age Requirements

All athletes participating in the Olympic Winter Games Milano Cortina 2026 in bobsleigh must fulfill the age requirements as stated in [bylaw 8.4 Licenses of the IBSF International Bobsleigh Rules](#).

### Medical Requirements

To be eligible to participate in the Olympic Winter Games Milano Cortina 2026, all athletes must satisfy medical requirements in accordance with [bylaw 8.4 Licenses of the IBSF International Bobsleigh Rules](#) and possess appropriate and adequate insurance coverage against accidents and third-party civil liability.

#### Additional IF Eligibility Criteria

All athletes must possess a valid IBSF international license. Selected pilots must have participated in and been ranked in a minimum of eight IBSF races on at least three different tracks in the period between 1 October 2024 and 18 January 2026. In addition, the pilot must have been ranked in at least five of the eight above mentioned races on a minimum of two different tracks during the 2025/2026 season (per event) by 18 January 2026 (11.59 p.m. Central European Time (CET)) and must have been ranked among the top 50 in the men's bobsleigh IBSF Combined Ranking List or in the top 40 in the women's bobsleigh IBSF Combined Ranking List, respectively in the women's monobob IBSF Ranking List of the season 2025/2026 by 18 January 2026 (11.59 p.m. CET).



3.1.3 QUALIFICATION PATHWAY

The qualification process takes place via participation in the federation’s competition activity. Qualification is achieved by the pilots’ results. Pilots gain a qualification slot for their NOC.

Participation in 2-man competitions counts only for 2-man, while participation in 4-man competitions counts only for 4-man. Participation in women’s monobob competitions counts only for women’s monobob, while participation in 2-woman competitions counts only for 2-woman.

Quota Places

NUMBER OF QUOTA PLACES

- D.1
- 4-man: 28 crews
- 2-man: 28 crews

QUALIFICATION EVENTS

D.1.1 Men’s Bobsleigh IBSF Combined Ranking List

The Men’s Bobsleigh IBSF Combined Ranking List will be made by combining the best results of each pilot in both the 2-man and 4-man events during the 2025/2026 season until the deadline of 18 January 2026 (11.59 p.m. Lausanne time), in all races that the pilot will have participated in, regardless of the race series below in which the results were scored:

- a) World Cup
- b) Europe Cup
- c) North American Cup
- d) Asian Cup

The number of races taken into account for determining the Men’s Bobsleigh IBSF Combined Ranking List is the same as the number of World Cup races by event conducted during the 2025/2026 season until the deadline of 18 January 2026 (11.59 p.m. CET).

In cases of equal points, the following decision criteria apply for the Men’s Bobsleigh IBSF Combined Ranking List:

- a) first, the highest amount of points obtained in a 2-man single race;
- b) next, the highest amount of points obtained at the last 2-man race before the qualification deadline;
- c) next, the highest amount of points obtained in a 4-man single race; and
- d) next, the highest amount of points obtained at the last 4-man race before the qualification deadline.



World Cup points are of higher priority than points obtained in the other race series.

Points calculation for each event above can be found in Rule 11 Ranking List of the [IBSF International Bobsleigh Rules](#).

**D.1.2 Allocation of Quotas For 2-Man and 4-Man**

**D.1.2.1** The quotas for the 2 NOCs with 3 crews will be allocated to the top 2 eligible NOCs with the third-best pilot on the Men’s Bobsleigh IBSF Combined Ranking List as of 18 January 2026.

**D.1.2.2** The quotas for the 7 NOCs with 2 crews will be allocated to the top 7 eligible NOCS with the second-best pilot on the Men’s Bobsleigh IBSF Combined Ranking List as of 18 January 2026 that have not been allocated a quota place via D.1.2.1.

**D.1.2.3** The remaining 8 quota places in men’s bobsleigh will be allocated to the top 8 eligible NOCs with the best-ranked pilot on the Men’s Bobsleigh IBSF Combined Ranking List as of 18 January 2026 that have not been allocated a quota place via D.1.2.1 or D.1.2.2.

**D.1.2.4** If the host country is not allocated a quota place via D.1.2.1, D.1.2.2 or D.1.2.3, the quota place of the NOC with the lowest-ranked pilot on the Men’s Bobsleigh IBSF Combined Ranking List via D.1.2.3 will be allocated to the highest-ranked pilot from the host country on the Men’s Bobsleigh IBSF Combined Ranking List.

**NUMBER OF QUOTA PLACES**

**D.2**

**Women’s Monobob: 25 Pilots**  
**2-Woman: 25 Crews**

**QUALIFICATION EVENTS**

**D.2.1 Women’s Bobsleigh IBSF Combined Ranking List**

The Women’s Bobsleigh IBSF Combined Ranking List will be made by combining the best results of each pilot in both the 2-woman and women’s monobob events during the 2025/2026 season until the deadline of 18 January 2026 (11.59 p.m. CET), in all races that the pilot will have participated in, regardless of the race series below in which the results were scored:

- a) World Cup
- b) Europe Cup
- c) North American Cup
- d) Asian Cup

The number of races taken into account for determining the Women’s Bobsleigh IBSF Combined Ranking List is the same as the number of World Cup races by event conducted during the 2025/2026 season until the deadline of 18 January 2026 (11.59 p.m. Lausanne time).

In cases of equal points, the following decision criteria apply for the Women’s Bobsleigh IBSF Combined Ranking List:

- a) first, the highest amount of points obtained in a Women’s monobob single race;
- b) next, the highest amount of points obtained at the last Women’s monobob race before the qualification deadline;
- c) next, the highest amount of points obtained in a 2-woman single race; and
- d) next, the highest amount of points obtained at



the last 2-woman race before the qualification deadline.

World Cup points are of higher priority than points obtained in the other race series.

### **D.2.2 Allocation of Quotas for 2-Woman Bobsleigh**

**D.2.2.1** The quotas for the 3 NOCs with 3 crews will be allocated to the top 3 eligible NOCs with the third-best pilot on the Women's Bobsleigh IBSF Combined Ranking List as of 18 January 2026.

**D.2.2.2** The quotas for the 5 NOCs with 2 crews will be allocated to the top 5 eligible NOCs with the second-best pilot on the Women's Bobsleigh IBSF Combined Ranking List as of 18 January 2026 that have not been allocated a quota place via D.2.2.1.

**D.2.2.3** The quotas for the 6 NOCs with 1 crew will be allocated to the top 6 eligible NOCs with the best-ranked pilot on the Women's Bobsleigh IBSF Combined Ranking List as of 18 January 2026 that have not been allocated a quota place via D.2.2.1 and D.2.2.2.

**D.2.2.4** If the host country is not allocated a quota place via D.2.2.1, D.2.2.2 or D.2.2.3, the quota place

of the NOC with the lowest-ranked pilot on the Women's Bobsleigh IBSF Combined Ranking List via D.2.2.3 will be allocated to the highest-ranked pilot from the host country on the Women's Bobsleigh IBSF Combined Ranking List.

### **D.2.3 Women's Monobob IBSF Ranking List**

During the 2025/2026 season until the deadline of 18 January 2026 (11.59 p.m. CET), the best results of each pilot in all races they have participated in, regardless of the race series in which the results were scored, are totalled to form the Women's Monobob IBSF Ranking List.

The maximum number of races taken into account for determining the Monobob IBSF Ranking List will be the same as the number of World Cup races conducted during the 2025/2026 World Cup season until the deadline of 18 January 2026.

### **D.2.4 Allocation of Quotas for Women's Monobob**

**D.2.4.1** The quotas for the 2 NOCs with 3 pilots will be allocated to the best 2 eligible NOCs already qualified for the 2-woman bobsleigh event and determined by the third best pilot on the Women's Bobsleigh IBSF Combined Ranking List as of 18 January 2026.

**D.2.4.2** The quotas for the 4 NOCs with 2 pilots will be allocated to the best 4 eligible NOCs already qualified for the 2-woman bobsleigh event that have not been allocated a quota place via D.2.4.1 as of 18 January 2026.

**D.2.4.3** The quotas for 5 of the remaining 11 NOCs with 1 pilot will be allocated to the next best 5 eligible NOCs that have not been allocated a quota place via D.2.4.1 or D.2.4.2 as of 18 January 2026.

**D.2.4.4** The quotas for the remaining 6 NOCs with 1 pilot will be allocated to the top-6 eligible NOCs with the highest-ranked pilot on the IBSF Women's Monobob Ranking List that have not been allocated a quota place via D.2.4.1, D.2.4.2 or D.2.4.3 as of 18 January 2026.

**D.2.4.5** If the host country is not allocated a quota place via D.2.4.1, D.2.4.2, D.2.4.3 or D.2.4.4, the quota place of the NOC with the lowest-ranked pilot on the IBSF Women's Monobob Ranking List from D.2.4.4 will be allocated to the highest-ranked pilot from the host country on the IBSF Women's Monobob Ranking List.



Host Country Places

If the male and female pilots of the host country do not qualify via the qualification process set out above, it will still have the right to take part in the following events with:

- one 2-man bobsleigh crew;
- one 4-man bobsleigh crew;
- one 2-woman bobsleigh crew; and/or
- one women’s monobob.

Only pilots and crew members meeting the eligibility requirements defined above can be entered. If no pilot can achieve these conditions, the host country will have no representative.

3.1.4 CONFIRMATION PROCESS FOR QUOTA PLACES

The IBSF will publish the results on its website ([www.ibsf.org](http://www.ibsf.org)) on 18 January 2026 and will inform the respective NOCs of their allocated quota places on 19 January 2026. The NOCs will then have to confirm if they wish to use these quota places by 21 January 2026 (11.59 p.m. CET), as detailed in section 3.1.6 “Qualification Timeline”.

The host country must confirm in writing to the IBSF by 21 January 2026 (11.59 p.m. CET) the use of its host-country places.

3.1.5 REALLOCATION OF UNUSED QUOTA PLACES

General rules:

- exceeding the total amount of quota places for 2-man and 4-man bobsleigh is not allowed under any circumstances;
- exceeding the total amount of quota places for women’s monobob and 2-woman bobsleigh is not allowed under any circumstances; and
- unused quota places in an event cannot be reallocated to another event. For example, unused quota places in the 2-man bobsleigh cannot be reallocated to the 4-man or 2-woman bobsleigh.

Unused quota places for NOCs can, as an exception, be reallocated to an NOC that has not yet received a quota place. In case this is not possible due to eligibility criteria, the unused quota place will be assigned to the first NOC that has already qualified, whereas the maximum number of three teams per

NOC may not be exceeded.

If there are places still available for reallocation, only eligible NOCs that do not already have a qualified team by the end of the qualification period will be considered.

Among the potential candidates for reallocation, only the highest-ranked pilot in the respective IBSF Ranking Lists will enable his/her NOC to send a crew to fill a reallocation position.

In cases of equal points, the following decision criteria will be applied:

- a) first, the highest amount of points obtained in a single race;
- b) next, the highest amount of points obtained at the last race before the qualification deadline.

World Cup points are of higher priority than points obtained in the other race series.



Reallocation of Unused Host Country Places

Unused host country places will be reallocated to the next highest-ranked pilot on the respective IBSF Ranking Lists as of 18 January 2026.

3.1.6 QUALIFICATION TIMELINE

DATE	MILESTONE
1 October 2024–18 January 2026	Qualification period Publication of the 2024/2025 IBSF Calendar, which will determine the qualification events for the 2024/2025 season and will be made by 15 August 2024 Publication of the 2025/2026 IBSF Calendar, which will determine the qualification events for the 2025/2026 season and will be made by 15 August 2025
26 September 2025	Milano Cortina 2026 Accreditation deadline
18 January 2026	Publication of IBSF Ranking List
19 January 2026	IBSF to inform the NOCs of their allocated quota places
21 January 2026	NOCs to confirm the use of allocated quota places to IBSF (within 48 hours of receiving the quota) Deadline for NOCs that want to be considered for reallocation places to inform the IBSF of their request in writing
22–25 January 2026	IBSF to reallocate all unused quota places and NOCs to confirm within 24 hours
26 January 2026	Milano Cortina 2026 Sport Entries deadline
6–22 February 2026	Olympic Winter Games Milano Cortina 2026



3.1.7 Ap Athletes

Ap alternate athletes are non-competing athletes and are not included within the athletes’ quota as per the section “Athletes Quota”. More detailed information about access rights and entitlements will be provided later. Ap alternate athletes can only become competing athletes as per the conditions outlined in the Late Athlete Replacement Policy (to be released in March 2025).

In bobsleigh competitions, Ap alternate athletes (according to the distribution table below) may be part of the crew as a substitute. In principle, the same crew must take part in each run. However, in the event of injury or illness, the Late Athlete Replacement Policy is applicable and will be implemented. It is possible to apply for a replacement of the members of the crew – except for the pilot – with the approval of the judges and the IOC.

Ap alternate athletes must comply with the same eligibility rules as competing athletes as described in above section “Athlete Eligibility”.

Quota Places

2-Man and 4-Man Bobsleigh

NUMBER OF CREWS QUALIFIED PER NOC		ATHLETES QUOTA PER NOC	AP ATHLETES QUOTA
2-MAN	4-MAN		
1	0	2	1
2	0	4	1
3	0	6	2
0	1	4	1
0	2	8	1
0	3	12	2
1	1	4	1
2	1	5	1
3	1	6	2
1	2	8	1
2	2	8	1
3	2	9	2
1	3	12	2
2	3	12	2
3	3	12	2



Quota Places

Women’s Monobob and 2-Women Bobsleigh

NUMBER OF CREWS QUALIFIED PER NOC		ATHLETES QUOTA PER NOC	AP ATHLETES QUOTA
2-WOMAN	MONOBOB		
1	0	2	1
2	0	4	1
3	0	6	2
0	1	1	0
0	2	2	0
1	1	2	1
2	1	4	1
3	1	6	2
1	2	2	1
2	2	4	1
3	2	6	2
3	3	6	2
1	3	12	2
2	3	12	2
3	3	12	2



## 3.2 SPORT ENTRIES AND QUALIFICATION

### SPORT ENTRIES PROCESS

The sport entries process is one of the last important steps that NOCs must take to ensure smooth and efficient registration for their delegation to the Olympic Winter Games Milano Cortina 2026. The sport entries process allows for the official entry/registration of eligible and qualified athletes and teams to disciplines and events, ensuring their participation in the Olympic Winter Games. The final step of the sport entries process is implemented through the online Sport Entries Qualification System (SEQ), which allows all NOCs to manage, review and submit their individual athletes' and teams' entries online.

### TRACKING AND VERIFICATION OF QUALIFICATION STATUS

The NOC's qualification status will be tracked and lastly verified by the Milano Cortina 2026 Sport Entries team in strict cooperation with the IFs, in accordance with the qualification system for the Olympic Winter Games Milano Cortina 2026,

through the Sport Entries Qualification Monitoring System (SQM), an integrated sub-function within the online SEQ.

The tool will be made available to all NOCs from March 2025. With the SQM, the NOCs will be able to monitor, manage, and compare their qualification numbers with the ones that Milano Cortina 2026 captures following the conclusion of each qualification event and once they become official.

### ONLINE ENTRIES

The submission of sport entries by NOCs for the Olympic Winter Games Milano Cortina 2026 will happen through the online SEQ, which is available only in English.

NOCs will be able to access the SEQ from 1 December 2025 until 26 January 2026 at 11.59 p.m. Central European Time (CET) to register their athletes and teams to events for which they are eligible and qualified. Only athletes registered by NOCs via the Accreditation function of the Milano Cortina 2026 Olympic Management System (OMS), and therefore included in the "long list", will be available to be entered/registered in the SEQ.

### LATE ATHLETE REPLACEMENT (LAR)

All replacements requested by NOCs after the final-entries deadline on 26 January 2026 must follow the Late Athlete Replacement Policy, which will be released by the IOC in March 2025.

The policy will be supplemented with the LAR Annex, which will explain in detail the process for each sport/discipline.

LARs can only be implemented through the e-LAR tool provided, which allows electronic submission of late-athlete-replacement applications. The e-LAR tool is a sub-function of the SEQ and will be accessible to all NOCs following the sport-entries deadline.



### **3.3 DOPING CONTROL**

During the Olympic Winter Games Milano Cortina 2026, doping control is carried out in accordance with the IOC's anti-doping rules. Urine and blood samples may be collected before and after competitions.

The IOC delegates to the International Testing Agency the authority and responsibility to implement the doping control programme of the Olympic Winter Games Milano Cortina 2026. The International Testing Agency, in consultation with the Milano Cortina 2026 Organising Committee and the IBSF, determines the number of tests to be performed. Samples can be collected anytime, anywhere.

Doping control may include testing for all prohibited substances and methods referred to on the World Anti-Doping Agency (WADA) prohibited list.





# **4 COMPETITION RULES**





# 4.1 COMPETITION MANAGEMENT

Milano Cortina 2026’s Competition Management team is responsible for organising the bobsleigh competition at the Olympic Winter Games Milano Cortina 2026.

## Milano Cortina 2026 Competition Management

*Sport Director*  
Anna RICCARDI

*Head of Sport Competition*  
Alberto GHEZZE

*Sport Manager*  
Normunds KOTANS

*Deputy Sport Manager*  
Americo ANGARAN

*Sport Assistant*  
TBD

*Sport Coordinator*  
Giorgia FAVERO

*Race Director*  
TBD

*Race Director Assistant*  
TBD

## Sport Services & Planning Area

*Head of Sport Services & Planning*  
Filippo BAZZANELLA

*Sport Services & Planning Manager*  
Valerio BERTUCCIOLI

*IF Services Manager*  
Josephine ASCHHOFF

*Sport Information Coordinator*  
Antonio BASSI

*Sport Publication Manager*  
Eugenio PERALTA

*Sport Publication Coordinator*  
Cecilia MUSSI



## **International Bobsleigh & Skeleton Federation (IBSF)**

*President*

Ivo FERRIANI

*Secretary General*

Heike GROESSWANG

*Jury President*

TBD

*Jury Members*

TBD





## 4.2 COMPETITION FORMAT

Please refer to the IBSF website (<https://www.ibsf.org/en/inside-ibsf/downloads-resources>) for any possible updates to the rules regarding international bobsleigh competitions.

There are four bobsleigh events at the Olympic Winter Games Milano Cortina 2026: 2-man, 4-man, women's monobob and 2-woman.

Bobsleigh teams consist of a pilot in the women's monobob event, a pilot and a brakewoman/ brakeman in the 2-man and 2-woman event; and a pilot, two crewmen and a brakeman in the 4-man event.

All events are held over four descents called "heats" on two consecutive days, with two heats per day. Results are calculated by adding the times of all competition heats together, with the lowest aggregate time winning. Only the top 20 sleds will take part in the last heat.

At least one heat must be conducted for the race to be officially valid. Up to three of the four heats may be cancelled due to weather conditions.

At least six official training heats for each of the four events must be offered. Pilots must have completed at least two valid training heats to qualify for the competition.

### **Starting Order**

For official training: the draw organised at the team captains' meeting determines the starting order for the first two training days. The starting order of sleds for the third training is based on the IBSF discipline ranking.

The draw determines the starting order of the NOCs. Sleds within each NOC start in the order in which they are listed in the entry list submitted by team captains before the draw.

On the first training day, sleds start in the order drawn in both heats. On the second training day, they start in reverse order of the draw. The order of sleds within each NOC is the same on both days.

For the competition: the 10 best-placed pilots present will choose their starting numbers from 1 to 10. All other pilots start according to their ranking in the current IBSF discipline ranking lists from starting



number 11 to the end. Exceptions to this rule are defined in the IBSF International Bobsleigh Rules.

During the second race heat, the 25 best-ranked sleds from the first heat will start in reverse order, followed by the remaining sleds (26 to the end). During the third heat, sleds will start in the ranking order after two race heats, and in the last heat only the 20 best-ranked sleds will start in reverse order.

#### **Team Changes**

During the competition, pilots cannot be changed but, for medical reasons and under certain conditions, the exchange of a brakewoman/ brakeman or crewman is possible in the case of injury or illness.

#### **Tiebreak Rules**

Despite the fact that results are measured to one hundredth of a second, ties may occur. Sleds sharing the same aggregate time are tied and share the same rank.

#### **Penalties/Disqualification Rules**

During the heats, sleds may be disqualified for various reasons. The most common ones are: overweight sled, runner temperature higher

than allowed, incomplete team at the finish and late start. All medal-winning sleds are checked immediately after the final heat. Upon the findings and recommendations of the materials commission, the jury may disqualify a sled after the end of a competition.

### **4.3 TEAM CAPTAINS' MEETINGS (TCM) AND DRAWS**

The team captains' meeting for each event will take place before official training and before competition.

Please note that conditions may impose that the team captains' meeting be held online. In such an event, an appropriate video-conferencing system will be set up and information on how to connect will be provided to the teams no later than five days prior to the first team captains' meeting.

A draw is held during the first team captains' meeting to determine the starting order of the training sessions for the first two training days.

### **4.4 PROHIBITION OF TRAINING**

Training on the competition tracks will be managed according to the [International Bobsleigh Rules](#).

### **4.5 PROTESTS**

Protests must be made to the jury. The rules state that verbal announcement of the protest must be made within five minutes after the end of the heat in which the incident occurred. Additionally, the grounds for the protest must be submitted in writing to the jury no more than 20 minutes after the conclusion of the race.

A fee in the value of 100 euros must be paid with the submission of the written protest. If the protest is rejected, the fee is forfeited in favour of the IBSF. Otherwise, the protest fee is returned.



## 4.6 TIMING AND SCORING

Timing and scoring are provided by OMEGA in accordance with IBSF rules and Olympic Results and Information Services (ORIS). Two independent timing systems, each consisting of at least one time-measuring device, a complete set of light beams and an independent power supply, must be available and in operation during competition (A and B systems).

The A system comprises all light beams for start, start time, four intermediate times, four speeds and finish time. The first interval time corresponds to the start time (50m). Four interval times must be evenly distributed across the remainder of the track. The time of day of both timing systems (A and B systems) must be synchronised and must provide accurate timing to one hundredth of a second.

## 4.7 COMPETITION EQUIPMENT

Competition equipment must meet the following requirements:

- 2-man bobsleigh: sled minimum weight of 170kg (375lbs), athletes and equipment maximum weight of 390.5kg (860.9lbs);
- 4-man bobsleigh: sled minimum weight of 210kg (463lbs), athletes and equipment maximum weight of 631kg (1,391.1lbs);
- 2-woman bobsleigh: sled minimum weight of 170kg (375lbs), athletes and equipment maximum weight of 330.5kg (728.6lbs); and
- women's monobob: sled minimum weight of 163kg (360lbs), athletes and equipment maximum weight of 248.5kg (547.8lbs).

Sleds have four runners (one pair of front runners and one pair of rear runners). The sleds may only be propelled by the pushing force of the team during the starting phase, and the force of gravity.

All bobsleigh sleds and clothing used during competition must comply with IBSF and IOC regulations. Bobsleigh sleds may be stored and maintained at the Cortina Sliding Centre.

## 4.8 AWARDS

Victory ceremonies will take place immediately following the completion of medal events. Ceremonies will include the presentation of medals, the raising of flags and the playing of the gold medalist's national anthem. In the event of force majeure, the ceremonies may be rescheduled.

All awards will be presented in accordance with the Olympic Charter.





# 5 COMPETITION SCHEDULE







# Competition Schedule V.8 (by day)



February 2026

		WED 04 -2	THU 05 -1	FRI 06 0	SAT 07 1	SUN 08 2	MON 09 3	TUE 10 4	WED 11 5	THU 12 6	FRI 13 7	SAT 14 8	SUN 15 9	MON 16 10	TUE 17 11	WED 18 12	THU 19 13	FRI 20 14	SAT 21 15	SUN 22 16
OPENING/CLOSING CEREMONY																				
ALPINE SKIING																				
BIATHLON																				
BOBSLEIGH																				
CROSS-COUNTRY SKIING																				
CURLING																				
FIGURE SKATING																				
FREESTYLE SKIING																				
ICE HOCKEY																				
LUGE																				
NORDIC COMBINED																				
SHORT TRACK SPEED SKATING																				
SKELETON																				
SKI JUMPING																				
SKI MOUNTAINEERING																				
SNOWBOARD																				
SPEED SKATING																				





If you require an accessible version of this document, please email  
Milano Cortina 2026 Editorial Services at:  
**[editorialservices@milanocortina2026.org](mailto:editorialservices@milanocortina2026.org)**

Olympic terminology (e.g. Olympic™, Olympics™ and Olympic Games™) and other Olympic properties are trademarks owned by the International Olympic Committee (IOC). All rights to the Olympic properties belong exclusively to the IOC. For further information please see **Olympic Properties ([olympics.com/ioc/olympic-properties](https://olympics.com/ioc/olympic-properties))**.

Fondazione Milano Cortina 2026 manages all Intellectual Property with respect to the Olympic Winter Games Milano Cortina 2026. For further information please see **Intellectual Property Protection ([milanocortina2026.org](https://milanocortina2026.org))**.





Worldwide Olympic and Paralympic Partners



Olympic and Paralympic Premium Partners



Olympic and Paralympic Partners



Olympic and Paralympic Sponsors



Official Supporters



Official Hospitality Provider







Published by Fondazione Milano Cortina 2026  
The Milano Cortina 2026 Organising Committee for the Olympic and Paralympic Winter Games  
© 2025 Fondazione Milano Cortina 2026 - All rights reserved.

[milanocortina2026.org](https://milanocortina2026.org)

